

Linn Lions Club

2023



Osage
County Fair

JULY 13-14-15

www.OsageCountyFair.com

Admission

Season Pass Price:

Child 15 & under ~ Free
Adults (16 & over) ~ \$20

Daily Pass Prices:

Thursday	\$5
Friday	\$15
Saturday	\$15

OSAGE COUNTY
Unterrified Democrat

SINCE 1866

Special Supplement of the Osage County Unterrified Democrat | Published July 5, 2023

The Maries County Bank

Pride in our past... Investing in your future.



Member FDIC

WELCOMES YOU TO THE ANNUAL

Osage County Fair



**THE MARIES COUNTY BANK BRINGS CONVENIENT BANKING OPTIONS
AND COMPETITIVE RATES TO YOUR FINGERTIPS,
NO MATTER WHERE YOU ARE!**

ONLINE BILL PAY | MOBILE BANKING | ESTATEMENTS | MOBILE DEPOSIT | TELEPHONE BANKING | ATM/DEBIT CARDS | OPEN AN ACCOUNT ONLINE

11 LOCATIONS CLOSE TO YOU

VIENNA | ARGYLE | BELLE | CUBA | DIXON
OWENSVILLE | VICHY | RICHLAND | ST. JAMES
IBERIA | ST. ROBERT

PH: 844.836.9401

WWW.MARIESCOUNTYBANK.COM

OR SCAN THE QR CODE

MEMBER FDIC | EQUAL HOUSING LENDER



This is where the fun begins!
SCHEDULE OF EVENTS...
 for more information see www.OsageCountyFair.com

THURSDAY, JULY 13, 2023

- 8 am** **Livestock Shows begin**
- 5 pm** **Food stand opens, Beer Garden opens**
- 6 - 8 pm** **Hot Wheel Races**
- (Registration at 6:00. Limited to 32 participants. \$1.00 entry fee gets you a car, Ages 0-14) Race starts at 7:00 pm, Food pavilion
- 6:30 pm** **Livestock sales**
- 6:45 pm** **Fair Opening Ceremonies**
- Color Guard Presented by Linn Fire Protection District
 - Invocation & Prayer - David Krueger, Senior Pastor First Baptist Church
 - National Anthem – Colonel Douglas Frank, Missouri National Guard
 - Tribute to Veterans
 - Recognize and give a huge THANK YOU to First Responders, Frontline Health Care Workers and Law Enforcement Officials
 - Welcome and Opening Comments - Mark Loethen
- 7 pm** **Little Miss and Mister Contest**
- "What I want to be when I grow up" Theme
 - Registration: 6:00 to 6:45 at Stage Area, No registration fee
 - Contact Nicki Bax with questions, (573)301-6944
- 7 pm** **Tractor Pulling Contest**
- 7:30ish** **Be on the lookout for the Show-Me Clowns!**
- 8 pm** **Reptile Experience by Steve the Reptile Man**
- Hold a lizard, pet a snake and see many, many other reptiles.
- 9 pm - Midnight: Music by Cassie Twehus**
- 9 pm** **Kids Games (for kids under 12)**
- Water Balloon Toss
 - Bubble Gum Chewing / Blowing
 - Turtle Race (Bring your own turtle. Prizes for fastest and prettiest.)

Event index:

- 3 on 3 Basketball
and Free Throw
Shootout page 27B
- Baby Show page 6B
- Beer Garden page 31B
- Better than Bad on
main stage page 14B
- Cassie Twehus page 14B
- Dirt Road Addiction on
main stage page 4B
- Fireworks Show page 36B
- Greased Pig
Contest page 16B
- Horseshoe Throwing
Contest page 37B
- Karaoke Contest page 22B
- Kids Karaoke
Contest page 12B
- Kids Morning Out at
the Fair page 15B
- Livestock Show
Schedule page 11B
- Little Mister & Miss
Contest page 10B
- Mud Bowl XXXIII page 18B
- Osage Drifters page 4B
- Power Wheels Mud
Run page 33B
- The Reptile
Experience page 37B
- Tractor Pull page 34B
- Washer Tour. page 11B



Osage Drifters
SATURDAY, JULY 15
7 pm TIL 8:30 pm



DIRT ROAD ADDICTION

MAIN STAGE
SATURDAY, JULY 15
9 PM TIL MIDNIGHT

 www.facebook.com/dirtroadaddiction

FRIDAY, JULY 14, 2023

9-11:30 am Kids' Morning Out at the Fair

- 4H Exhibit Pavilion

11 am Livestock Shows begin

- Arena

5 pm Food Stands and Beer Gardens Open

- Beef Show - Arena

5 pm Jumping Jacks Events Bounce Houses Open

- Armbands: \$10 (all you can bounce 5pm-10:30 pm)
- Tickets: \$2.00 a bounce

7 pm ATV Rodeo

7 pm Kids Tractor Pull

- Registration 6:30-7 at the Stage

8:00 pm Parent-Child look-a-like contest

- Stage

8:30 - 9 pm Hula hoop and twist contest

- Stage

8:30 pm Greased Pig Contest

- Registration: Starts at 6:00 pm at the west end of the track.

9 pm - **Midnight Music by Better Than Bad**

SATURDAY, JULY 15, 2023

1 pm Washer Tournament

- (Registration 12 - 12:30)
- Beer Garden, Contact Ryan Parkhurst with questions (573)680-9940

1 pm Beer Garden Open

3 pm Food Stand Opens

3 pm Horseshoe Throwing Contest-

- Contact: Bob Duncan 897-3703 or Richard Dudenhoeffer 897-2912

3 pm 3 on 3 Basketball Tournament and Free Throw Shootout

- Linn Elementary Gym
- Contact: Tom Klebba 897-2204 or Mark Baker

4 pm Jumping Jacks Events Bounce Houses Open

- Armbands: \$10 (all you can bounce 4pm-10:30 pm)
- Tickets: \$2.00 a bounce

4 pm Power Wheels Mud Run

- Bring your own power wheels and helmet.
- Track. Sponsored by Parts City. Contact Mitch Branson with questions (573)690-4205

5 pm Mud Bowl XXXIII

- Contact Kevin Hoeft with questions (314)220-7875

5:30 pm Baby Show Sponsored by Parents as Teachers

- Contact Cassie Sneller with questions (573)298-2997

6:00 pm Mint Hill Kids Choir

- Food Pavilion

7-8:30 pm "Old Time Country Music" by Osage Drifters

- Fiddle - Bass - Waltz's - Great Listening Music

8 pm Kids Karaoke Contest

- Picnic Pavilion by Big Missouri Karaoke Stars (Ross Entertainment)

9 pm - Midnight: **Music By Dirt Road Addiction**

- Stage

9 p.m - Midnight: **Adult Karaoke**

- Picnic Pavilion by Big Missouri Karaoke Stars (Ross Entertainment)

10 pm **FIREWORKS!!**

PARENTS AS TEACHERS BABY SHOW

Sat., July 15, 5:30 p.m.
Osage County Fair Stage Area

- Day at the Beach Theme
- Must be an Osage County resident
- Prizes for all participants
- Entry Fee is \$2 if registered after July 14
- First place trophy, second and third place ribbons
- Check in time is 5 p.m. at the stage area
- Arrive at the stage area at appx. 5:15
- Fair admission will be charged at gate

CATEGORIES

- Birth to 12 months
- 12 to 24 months
- 24 to 36 months
- 36 to 48 months

Questions Call: Cassie Sneller at 573-298-2997
or Abigail Duke 573-694-2575

Registration forms are available at Thriftway Customer Service, Legends Main Bank, Linn Library
Download a form at: www.osagecountyfair.com

Cassie Sneller • 875 Hwy CC
Linn, MO 65051



Check out the website for the schedule of events!
www.osagecountyfair.com



Hwy. 63, Westphalia, MO

573-455-2307

- Family Owned - Darlene and Duane Fennwald -

★ *Have fun at the*  **2023 FAIR** ★

BESCHEINEN  **FAMILY FURNITURE OF LOOSE CREEK** ★

573-897-2480 | www.BescheinenFurniture.com

2188 Loose Creek Hwy. • Loose Creek, MO 65054

FULL SERVICE ROOFING

Specializing in Hidden Fasteners and Standing Seam Roofs



Long Term Roofing Solutions
573-690-5100

Mark Kloepfel ~ Owner

Enjoy The Osage County Fair!

THE NEXT TIME YOU NEED PARTS
SEE ONE OF THE KNOWLEDGEABLE
PEOPLE AT...

Parts City AUTO PARTS

Mon. - Fri. 8 a.m. - 7 p.m. • Sat. 8 a.m. - 5 p.m.
Sunday 10 a.m. - 4 p.m.

1769 Hwy 50 East • Linn, MO 65051

573-897-2020

Military discount for active and retired.

ADVERTISER INDEX ON PAGE 38



**OSAGE COUNTY
Fair**

Haviland Corp. & Hwy U-Store-It

Celebrating 77 years  897-3672

Welcome to Osage County...



**FAIR
DAYS**

Chamois Ag Supply
(573) 763-5317

108 N. Market | Chamois, MO 65024



DRAKE-BEEMONT Mutual Insurance Company

— Since 1911 —

261 Hwy. 50 - Rosebud, MO 63091
Phone (573) 764-4625 Fax (573) 764-4629
website: www.drakebeemont.com
FIRE - WIND - LIABILITY - HOME OWNERS
OTHER PERILS

BOARD OF DIRECTORS

- Kaye Schneider - *President*
- Wm. Steve Helterbrand - *Vice President*
- Leland Wehmeyer - *Secretary*
- Jeffrey Nolting - *Treasurer*
- Nolan Hesemann - *Director*
- Debbie Winters - *Director*
- Larry Kopp - *Director*
- Craig Dozier - *Director*
- Charles H. Gross - *Director*

AGENTS

- Deborah S. Raaf (573) 764-2548
- Holly Morgan (636) 744-1551
- H. Wayne Groner (573) 237-7770
- Keith Spurgeon (573) 885-2344
- Paul Juergens (573) 468-4252

OFFICE STAFF: Patricia Hickman,
Kelsey Jordan, Kate Angell
ADJUSTER/LOSS CONTROL
AGENTS: Ron Nowack, Ken Dixon



GRINNELL MUTUAL

**ALL PHOTOS IN THIS
SECTION BY
NEAL JOHNSON &
ED GEHLERT**



*Best Wishes to the
Linn Lions Club*

**VFW & AUXILIARY
MEMBERS
POST 4756**



Hope to
see you at the
Osage County
FAIR!

**LANE BUILDING
PRODUCTS INC.**
(573) 437-4147 Hwy. 28 West
Owensville, MO

FAIR DAYS



American Auto Supply
CAR - TRUCK - TRACTOR - PAINT - WELDING SUPPLIES
HOURS: MON. THRU FRI., 8AM-6PM | SATURDAY., 8AM-6PM
602 E. Main Street | Linn, MO | 573-897-3655



**GRINNELL
MUTUAL**
Freedom Mutual
Insurance Co.

913 E. Main Street • PO Box 674 • 573-799-4340
Linn, Missouri 65051
Established in 1885
FARM AND HOME INSURANCE

J. Kinder, Agent - Manager
573-694-9847

John Lemmel, Agent • 573-897-3905

Tom Kixmueller, Agent
573-943-6989 or 573-437-4755

Mary Nilges, Agent • 573-728-6441

Ross Seals, Agent • 573-897-2865

Norman Buschmann, Agent • 573-694-4705

Donald Nilges, Agent • 573-619-9057

Shannon Lemmel Voss, Agent • 537-694-9991

Veronica Nilges, Agent • 573-619-9057



**HOMETOWN
BUILDING CENTER**
Hwy. 50 West • P.O. Box 650
Linn, MO 65051

**Complete Line of
Building Materials
AND Hardware**

**WATCH FOR
OUR NEWLY
REMODELED STORE**

**(573) 897-2276
1-800-428-2288**
BUILDING SUPPLY
ELECTRICAL & PLUMBING • HARDWARE



***THERE'S NOTHING LIKE YOUR COUNTY
FAIR TO MAKE YOU FEEL AT HOME.***



**Three Rivers
Electric Cooperative**
with offices in Linn & Brazito
1-800-892-2251

With Smarthub you can receive
notifications, pay your bill, report service
issues, contact the co-op and more!



Find us on
Facebook & Instagram!



Touchstone Energy[®]
Cooperatives

Osage County Fair
Little Mister and Miss
Sponsored by the Linn Lions Club
BOYS & GIRLS: AGES
4 & 5 YEARS OLD
JULY 13th, 2023 @ 7 p.m.
 Fairgrounds Main Stage (no entry fee)
 Kids may dress, if they choose, as
“WHAT I WANT TO BE WHEN I GROW UP”



Prizes are awarded to all participants.
 For questions: Call Nicki at 573-301-6944 or email at nicki.bax@att.net

To Participate, mail form to: Little Mister & Miss Contest, PO BOX 74, Freeburg, MO 65035 or bring the form with you to the contest. Form can also be found online.

Check out the website for the schedule of events! www.osagecountyfair.com

Have fun at this year's Osage County Fair





2041 Highway 63
 P.O. Box 68
 Westphalia, MO 65085
 (P) 573-455-2394
 (F) 573-455-2378
www.rehagenhvac.com

- Sales
- Service
- Installation



Smarter from the Ground Up™



Proud Supporter of the Osage County Fair!



Osage Feed & Supply LLC
 (573) 897-2496
osagefeed@gmail.com
 162 County Rd. 402
 Loose Creek, MO 65054






HERITAGE COMMUNITY BANK

Always at your fingertips with a wide assortment of electronic banking options:

- Remote capture deposit from your phone
- Internet Banking
- Zelle
- Bill pay

Deposit and Loan products to suit your every need, including
FIXED RATE LOANS!

Call, come by or check us out on the web
 101 South Main St., Chamois, MO
www.HCBANKS.COM
573-763-5958




See you at the Fair!



Main Street
Pizza
573-680-7206

Now Serving
Burgers & Fries!



WWW.MAINSTPIZZA.ORG

HOURS: Closed Monday
 Tuesday - Thursday 11 AM to 8 PM
 Friday - Saturday 11 AM to 9 PM • Sunday 3 PM to 8 PM



WASHER TOURNAMENT

SAT., JULY 15

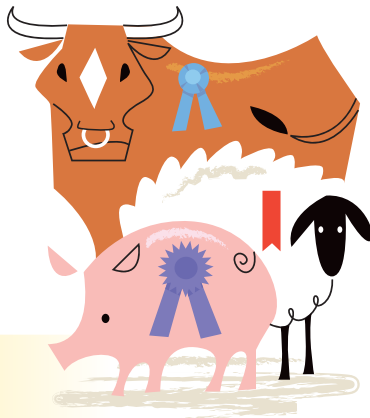
CASH PRIZES FOR THE TOP WINNERS

Entry Fee \$20 • Sign-up from Noon - 12:30

No Late Registration. • Starts at 1 p.m.

100% payout • Contact Ryan Parkhurst 573-680-9940

LIVESTOCK SHOW SCHEDULE



TENTATIVE

TUESDAY, JULY 11, 2023

Exhibit Building Interviews

6:30 - Happy Helpers, Country Clovers, Rich Fountain
 7:00 - Lucky Clovers, Lucky Charms, Smiling Workers
 7:30 - Busy Bees, Happy Clovers, Eagles
 8:00 - FFA

WEDNESDAY, JULY 12, 2023

Barn open at 12:00 p.m. for Market Hog and Market Beef
 Swine in place by 4:30 p.m. Weigh-in and Ultrasound of Swine
 Beef Cattle in place by 5:00 p.m. Weigh-in and Ultrasound after Swine
Beef Superintendent will assign stall spaces to the exhibitor.

THURSDAY, JULY 13, 2023

	CHECK-IN	SHOW
Market Hogs	Wed. - 4:30 p.m.	8 a.m.
Market Beef	Wed. - 5 p.m.	1 p.m.
Market Lamb & Goats	Thurs. - 8 to 9:30 a.m.	11 a.m.
Hams/Bacon	Thurs. - 7:30-9 a.m.	9:15 a.m.
Broilers	Thurs. - 8 a.m.	FOLLOWING CHECK-IN
Rabbits	Thurs. - 10:30 a.m.	FOLLOWING CHECK-IN

** All market animals MUST be removed from the fairgrounds following the sale Thursday night. Removal is the SELLER'S responsibility.

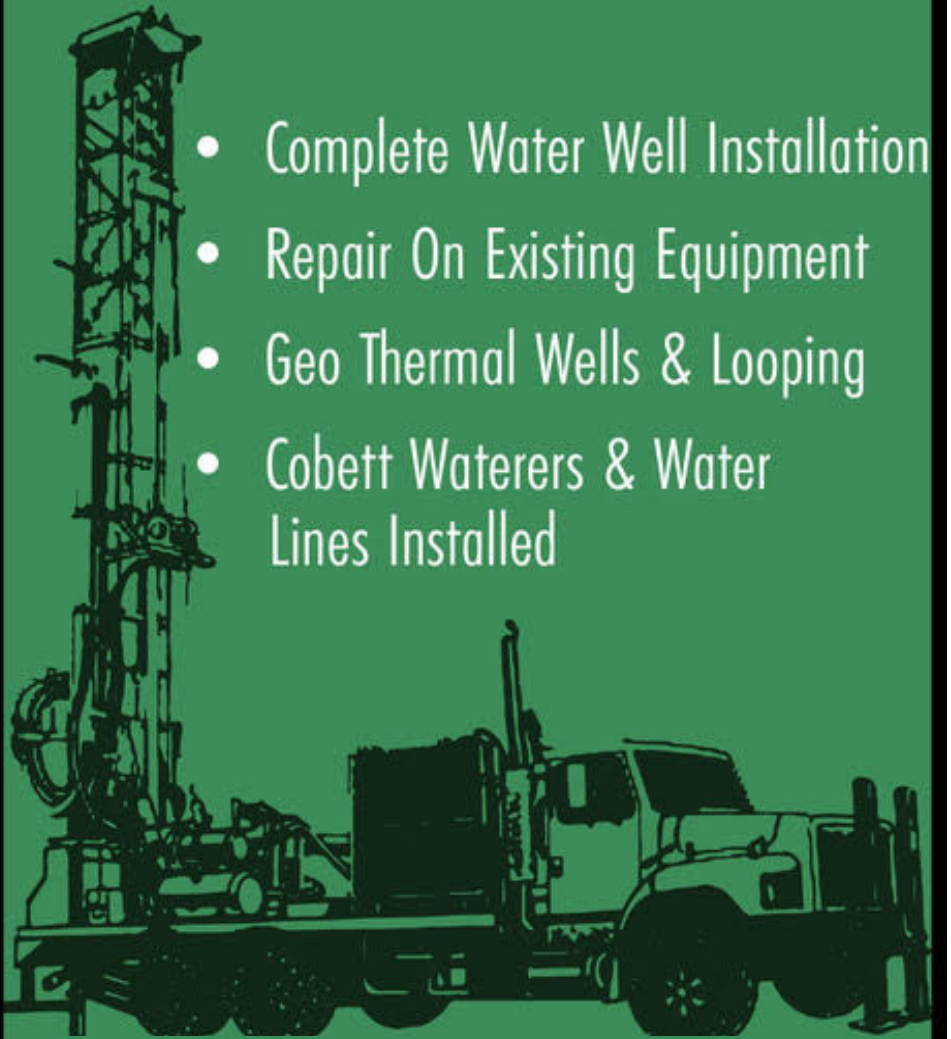
FRIDAY, JULY 14, 2023

	CHECK-IN	SHOW
Bucket Calf	9 a.m.	11 a.m.
Dairy Cattle	10 a.m.	1 p.m.
Poultry & Rabbits	8 to 10 a.m.	12 noon
Sheep	10 a.m.	3 p.m.
Goats	10 a.m.	3 p.m.
Swine	12 noon	2 p.m.
Beef	12 noon	5 p.m.

Looking forward to the Osage County Fair.



Well Drilling & Pump Service Inc.



- Complete Water Well Installation
- Repair On Existing Equipment
- Geo Thermal Wells & Looping
- Cobett Waterers & Water Lines Installed

Free Estimates on New Wells!

 bhwelldrilling.com


 573-455-9111

Kids
Karaoke
Saturday, July 15
8 p.m.
Registration 7-8 p.m.



For Kids 16 years and younger
Trophies for 1st and 2nd place - Solo category

SPOTLESS
Car Washes



Spotless 50 Carwash • Spotless Belle • Linn Car Wash
 Hwy. 50, Linn Hwy. 89 Jct. 6th & Jefferson Streets

Bill & Laura Voss, Owners

MIDTOWN
BARBERSHOP



Don Orscheln
897-2114
 917 E. Jefferson St., Linn

**Good For You and
 Your Community Too!**



**Stop in and chat with the team
 at our Linn Branch today!**

MID AMERICA BANK
 midambk.com

Coca-Cola[®]



**Enjoy a
 refreshing
 Coca-Cola at
 the Osage
 County Fair!**



JEFFERSON CITY
Coca-Cola
 BOTTLING COMPANY

Serving customers and communities in 15 Mid-Missouri Counties

Welcome to the fair!

*Come
see us
for
all your
insurance
needs!*

**AMERICAN FAMILY
INSURANCE**®

All your protection under one roof®



MIKE MCDANIEL
AGENCY INC.
Linn, Mo
573-897-3142



HOLLIE DEAN
Belle, Mo.
1-888-306-9837
573-859-3878

American Family Mutual
Insurance Company and its
Subsidiaries
Home Office - Madison,
WI 07497 2/13

Cassie Twehus

MAIN STAGE

THURSDAY, JULY 13

9 PM TIL MIDNIGHT

www.facebook.com/cassietwehusmusic



MAIN STAGE

FRIDAY, JULY 14

9 PM TIL MIDNIGHT

Better
than **BAD**



www.facebook.com/BTBJCMO

OSAGE COUNTY

KIDS' MORNING OUT AT THE FAIR

Come join us!

FRIDAY JULY 14TH, 2023

Osage County Fairgrounds at the 4-H Exhibit Pavilion 9 a.m. to 11:30 a.m.

Variety of games and activities for all to enjoy!

CHILDREN OF ALL AGES WELCOME

PRESENTERS INCLUDE:

- Osage County Health Department
- Missouri Dept. of Agriculture
- Osage County Ambulance District
- University of Missouri Extension - Nutrition Program
- Osage County Sheriff's Office
- Missouri State Highway Patrol - Trooper Tyler O'Brien
- Osage County Library
- Three Rivers Electric Cooperative
- Hollis Farm LLC - Justin and Nathan Hollis
- Westphalia FFA
- Linn FFA
- Friends of the Library



573-897-4449

Roofing the entire state of Missouri
Polyurethane Foam & Elastomeric Coating Systems

We have a solution for all your commercial, flat and low slope roofing needs

Our Community Matters

Shelter Insurance® is pleased to support the Osage County Fair

Dennis Fick - Agent

P.O. Box 216 • 2004 Highway 63 & Maries Westphalia, Missouri 65085

Bus: (573) 455-2724

Res: (573) 744-5805

LIFE • HOME • AUTO • FARM • BUSINESS



We're your Shield. We're your Shelter.

AUTO • HOME • LIFE

ShelterInsurance.com

Have a great time at this year's Osage County Fair!



Just as families make it a tradition to attend the Osage County Fair, so too is the tradition of quality from Quaker Window Products.

Freeburg, MO | www.quakerwindows.com





See you at the Osage County Fair!

PETERS PRECISION
LAWN & LANDSCAPE

- Landscape design
- Landscape installation
- Outdoor living areas
- Grade work
- Lawn installation
- Irrigation

Give us a call for all your outdoor needs!
573.291.6445

OSAGE COUNTY FAIR GREASED PIG CONTEST



Friday, July 14

beginning approximately 8:30 p.m.
 (after Kiddie Tractor Pull)

Registration will be on the
 west end of the track from 6-8 p.m.

Four different divisions: Division 1: Up to 4 years of age;
 Division 2: 5-7 years old;
 Division 3: 8-11 years old; Division 4: 12-14 years old;

Registrations may be limited dependent on number of entries

For Rules, Regulations and Entry Form
 call Paul Brandt 573-291-2141 or
 Jason Backes 573-897-4936 with questions



Your Friendly, Super Value, Full Service
Hometown Supermarket!

CHOICE MEATS - PRODUCE - GROCERIES - FLORAL
 BAKERY - DELI - LIQUOR



Have Fun at the Fair

THRIFTWAY

LINN, MO. • 573-897-2125

www.linnthriftway.com

6 A.M. TO 9 P.M. EVERY DAY
 DOWNLOAD OUR LINN THRIFTWAY APP
 AND FOLLOW US ON FACEBOOK



HAVE FUN AT THE OSAGE COUNTY FAIR!



PROUD SUPPORTER OF THE OSAGE COUNTY FAIR!

Casper's
66



ADMISSIONS:

Season Pass Prices:

**Child 15 and under, free;
Adults 16 and over, \$20**

Daily Pass Price:

**\$5 Thursday, \$15 Friday,
\$15 Saturday**

* ALL STAR * MVP * TACO * FIELDER'S CHOICE *



63 Progress Lane, Suite G
Linn, Missouri 65051

Chris and Kara,
Owners



Frozen Custard

107 N Alvarado Ave. • Belle, MO
573-263-1967



- Frozen Custard
- Waffle Cones
- Concretes
- Sundaes

Friday 4-9 • Sat & Sun: 12:00NOON TO 9:00PM

OSAGE ACCOUNTING AND TAX SERVICE LLC

DEBBIE PRATER • DENISE BOECKMANN

104 EAST MAIN STREET • PO Box 679
LINN, MISSOURI 65051

PHONE: 573-897-4188

E-Mail: osagetax@sbcglobal.net

Richard Moffat Auction Service

Over 40 Years Of Experience

- Antiques
- Estates
- Household
- Farm
- Business Liquidations
- Real Estate Auctions

**12,000
Square Foot
Auction
Facility**

**FULLY EQUIPPED
LICENSED AND INSURED**

www.moffatauction.com
In Jefferson City Call

**THE MOFFAT CENTER
COUNTY ROAD 604
LINN, MO.**

573-761-4293

573-897-4004

Outstanding in our Field



No one puts their money where our mouths are like the American farmer. We see the results of your hard work and commitment three times a day. We depend on it. You can depend on the folks at Shelter to take the same pride in our performance as you do in yours. **Call us today to find out how we can help.**

JEFF WOLFE
MAIN STREET
LINN, MO 65051

573-897-2190

573-897-3451 (Residence)



AUTO • HOME • LIFE

We're your Shield. We're your Shelter.
ShelterInsurance.com

LINN LIONS CLUB 2023 OSAGE COUNTY FAIR

Mud Bowl XXXVIII

Saturday, July 15 Races Start at 5 p.m.

Entry fees vary by class . DRIVERS MEETING AT 3 PM .

Tech is from 2:30 pm - 4 pm

Everyone pays at gate and drivers will be refunded at registration.

NO RIDERS – NO DRIVERS ALLOWED TO DRINK ALCOHOL

(Drivers will be given wrist bands at registration and if they are caught drinking alcohol, their wrist band will be cut and they CANNOT race.)

100% PAYBACK
plus added money and trophies

Open
Altered
Hotstreet
Superstock

Youth
Outlaw
Prostock
Dott 44

Hotstock
Modified
Stock

*Vehicle inspection upon entry, we reserve the right to reject any vehicle

Same rules as Missouri Mud Madness on Facebook.
Rules are on Mud Bowl 32 Facebook page

ALL DRIVERS MUST HAVE A CURRENT DRIVERS LICENSE AND MUST BE 16 YEARS OF AGE. RULES FOR GATEWAY MUD RACERS ASSOCIATION (GMRA). RULES ON FACEBOOK AND FAIR WEBSITE. DRIVERS MUST WEAR A HELMET AND SEAT BELT. MUST HAVE A CLEVIS AT REAR OF VEHICLE AND A FIRE EXTINGUISHER AVAILABLE.

All vehicles and participants must enter Gate #7,

Find us on Facebook: Mud Bowl 32

CONTACT KEVIN HOEFT AT 314-220-7875 FOR MORE INFORMATION

FEEL THE

Magic



Open a Cardinals Checking Account

Sign up for Cardinals Checking with Central Bank and get a 2013 League Champions road jersey and two game tickets.



CardinalsChecking.com

New Cardinals Checking household accounts only. \$50 minimum to open account. Debit card required. Not available on World Checking or Outlook Prepaid Card. One jersey per household. Incentives available while supplies last. One voucher per household for Monday–Thursday games only. Seats are subject to availability. See bank for details. Debit Cards are issued by The Central Trust Bank pursuant to a license by Mastercard® International Incorporated.

— OR APPLY FOR —

*Cardinals
Credit Card*



Score double points at Busch Stadium and online at Cardinals.com and redeem them for exclusive, once in a lifetime Cardinals experiences and merchandise!

Scan the QR code to learn more and apply!



Hometown Bank of the *St. Louis Cardinals*

CardinalsCredit.com

©2023 Central Bancompany. Member FDIC. All rights reserved. See bank for details. Subject to credit approval. Credit Cards are issued by The Central Trust Bank pursuant to a license by Mastercard® International Incorporated. Major League Baseball trademarks and copyrights are used with the permission of MLB Advanced Media, L.P. All rights reserved.



Central Bank

Strong roots. Endless possibilities.™



MUENKS INSURANCE AGENCY

AUTO - HOME - LIFE - HEALTH - FARM - BUSINESS

573-897-9900

105 W. Main St., Linn • 2974 Hwy. 50 West, Suite B, Loose Creek

194 Twin Ridge Road
573-897-3634

www.osageambulances.com

Welcome to the Fair



BRUCE SASSMANN

STATE REPRESENTATIVE
61ST DISTRICT

Paid for by Committee to elect Bruce Sassmann, Bruce Sassmann Treasurer.



Have a fun and safe
time at the fair!



Capital Region[®]
PHYSICIANS

An Affiliate of Health Care

LINN

Better. Every day.

(573) 897-2525 | 916 E. Main St., Linn | www.crmc.org

JIM BUTLER

CHEVROLET  DODGE  CHRYSLER  Jeep  RAM

 THANKS FOR MAKING US
#1 IN MID-MO!

WE DELIVER **NATIONWIDE** 

2023 CHEVY
SILVERADO 1500



5 NEW CAR
BRANDS

360+ VEHICLES
AVAILABLE



2023 RAM 1500

317 W. MAIN STREET | LINN, MO 65051 | 573.897.2254

MIDMOPowerhouse.com | JimButlerCDJR.com



Karaoke Contest

Saturday
July 15

Valora's Touch

Allows Dreams to Become Reality

**Wedding Consultant
and All Occasion
Rentals
Decorations
Alterations**

Valora Budnik
 P.O. Box 34 • Linn, MO 65051
 573-897-2403 • 573-619-5021

9pm - Midnight at the Picnic Pavillion by Food Stand

You be the Star by singing your favorite song. Nashville might be just around the corner!

- no entry fee
- trophies for first and second places

CATEGORIES

- Female, solo
- Male, solo
- Group (2 or more people)

No Pre-Registration, Register day of contest at the Picnic Pavillion by the food stand from 8-9 p.m.

By Ross Entertainment/"Big MO Karaoke Stars"

Being part of the community means CARING

We support the Linn Lion's Club and the Osage County Fair - Enjoy!

Kurt R Baker, AAMS®
 Financial Advisor

308 E Main
 Linn, MO 65051
 573-897-0687

edwardjones.com
 Member SIPC

Edward Jones
 MAKING SENSE OF INVESTING

2023 Osage County Fair

July 13-15

© 2023 Anheuser-Busch, Budweiser® Lager Beer, St. Louis, MO
 © 2023 Anheuser-Busch, Bud Light® Beer, St. Louis, MO

To support the fair and be contacted for the 2024 booklet call 573-897-3150 today!



WINTER-DENT
100% EMPLOYEE OWNED COMPANY

Insurance • Bonds • Employee Benefits • Financial Services

101 E. McCarty St. 3610 Buttonwood, Suite 310
Jefferson City, MO 65101 Columbia, MO 65201
573-634-2122 573-449-8100

Serving Central Missouri Since 1912
www.winterdent.com

In Business for 100 Years!



doc
Dickneite Oil Company

PO Box 68 • Freeburg, MO 65035
573-744-5228

Roy 573-469-5758 Jeff 573-619-1469
Scott 573-694-0086 Joey 573-821-3479

www.docgas.com docgas1920@gmail.com



HAVE FUN AT THE FAIR!

Linn Printing

1014A East Main Street • Linn, MO

573-897-3001
www.linnprinting.com

MT. STERLING OIL CO.
Covering Osage & Gasconade County

Your Supplier of
MAJOR BRAND OIL PRODUCTS

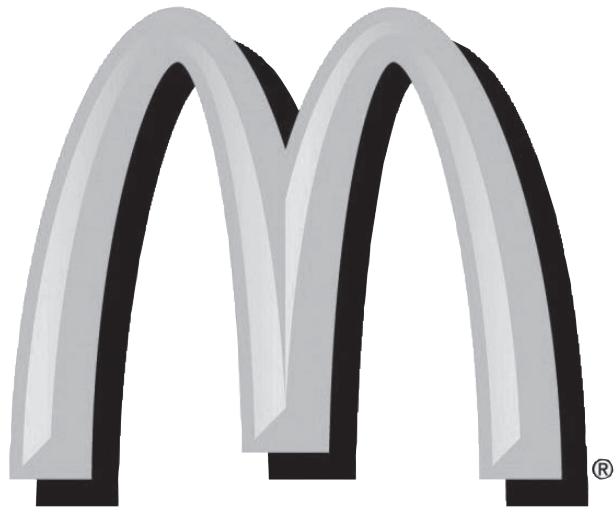
Mt. Sterling: 573-943-6393
130 years In Business
Since 1893

**SCHAEPERKOETTER
STORE INC.**
573-943-6321

Uniform Bulk Blend Fertilizer, Big Wheel Truck Spreading, Agricultural Limestone, Feeds, Nails and Staples, Fence and Barb Wire, Truck Loads - Corn, Truck Loads - Ag Chemicals, Steel Fence Posts

**SPREADER TRAILERS TO RENT
WE WILL HAUL YOUR GRAIN TO MARKET**

ADVERTISER INDEX ON PAGE 38



Make us part of your fair activities!
320 W. Main St., Linn Missouri

JOE MACHENS CAPITAL CITY



**807 Southwest Blvd
Jefferson City, MO 65109
573-634-4444**

JoeMachensFord.com



YOUR FAIR OUR SUPPORT

Coming together as a community is a county fair tradition. Join your neighbors and friends at your local fair and enjoy all it has to offer. Trust in Tomorrow.®

United Mutual Insurance Company
Steve Nolte, Agent
560 Main. Morrison, MO
Cell Phone 573-619-5441



"Trust in Tomorrow." and the "A Grinnell Mutual Member" mark are registered trademarks of Grinnell Mutual Reinsurance Company. © Grinnell Mutual Reinsurance Company, 2021.

Balkenbusch Excavating, LLC

Land Improvement Work

- Ponds
- Lakes
- Rock Chipping
- Clearing
- Basements
- Roads
- Septic Systems
- Dirt Moving
- Terracing
- Land Clearing
- Site Level
- Backhoe Service

**FREE
ESTIMATES**



Kenny
573-690-1432
573-897-3720



SEE YOU AT THE

FAIR!

Mayor, Dwight Massey

Aldermen

Robert (Bill) Turner

Steven Boeckmann

Dustin Flamm

Christopher Jaegers

City Treasurer, Janelle Jaegers

Utilities Superintendent, Derek McCubbin

Chief of Police, Samuel Ford

City Clerk, Carrie Grellner



City of **LINN**

LINN BOARD OF
ALDERMEN & EMPLOYEES





FURNITURE ★ FLOOR COVERINGS ★ APPLIANCES



Monday - Friday
9:00 am - 5:30 pm
Tuesday & Thursday
evenings by appointment

573-744-5405
fhc@freeburghomecenter.com

Mike & Becky Wilde
609 Hwy. 63 North | Freeburg, MO 65035




VIEW OUR ONLINE SHOWROOM
freeburghomecenter.com




Hilkemeyer's HONDA

"The Outdoor People"

DEALER IN FAMOUS BRANDS
HONDA, WOOLDRIDGE, WINCHESTER, WEATHERBY, BROWNING
AND EVERYTHING FOR THE OUTDOORSMAN

HUNTING • FISHING • TRAPPING

Hwy. 63 South, Freeburg, Mo. 65035 (573) 744-5245

PATRONIZE YOUR
MFA COOPERATIVE



*"Your Service Institutions - It Will Pay You
To Patronize Them."*

FEED - FERTILIZER - SEED - OIL - GAS
Custom Ground Feeds, Mixed at Freeburg
Ag Chemicals - Animal Health Products
Ritchie Equipment

Come check out our lawn supplies.
Mulch available in bags and bulk.

at the Linn Branch
573-897-2157 - 573-897-3063

M.F.A. Cooperative Assn. No. 280
573-744-5284 Freeburg, Mo. 573-744-5285

**Osage
County
Abstract
& Title Co.**

206 Main Street
Linn, MO 65051
573-897-2105

*Tanya Robinson &
Michelle Kuster*





Arts Pest Control

www.artspestcontrol.com
 429 W. Miller St. • Jefferson City, MO
 573-634-3299

3 on 3 BASKETBALL TOURNAMENT & FREE THROW SHOOTOUT - 3 P.M. SAT., JULY 15

LINN ELEMENTARY GYM

For more information call Tom Klebba at 897-2204 or pick up entry form at Main Legends Bank Lobby or sign up at 2 p.m. on day of event.

Enjoy the Osage County Fair!



Create a beautiful appearance and dress up your outdoor area with long-lasting concrete

A Lasting Impression

If you're interested in installing or replacing a *Patio, Sidewalk or Driveway* see us – your concrete specialists!

Osage County Concrete



428 Hwy. 50 W • Linn
573-897-2149



Linn Shoe Store

Shoes For The Entire Family

Ariat, Justin, LaCrosse, Danner, Red Wing, Durango, Nike, New Balance, Asics

Compliments of Tom and Harriet Wibberg

573-897-4500



Stay safe and have fun during the Osage County Fair!

BYP PATTERSON CONCRETE & CONSTRUCTION L.L.C.

Brian Patterson-Proprietor

**FLAT WORK
DRIVEWAYS,
FLOORS
CURBS &
GUTTERS**

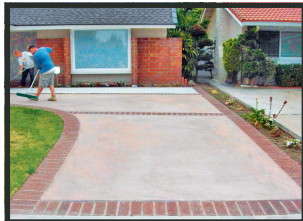
Bonded & Insured

**FREE
ESTIMATES**

P. O. Box 307 * Linn, MO 65051

Cell: 573-690-1249

Fax: 573-897-5701



Morton Chapel

Serving the families of Osage County since 1933

Linn Chapel
911 Main Street
897-2214

Chamois Chapel
405 Fourth Street
763-5522

www.mortonchapel.com

Mike and Pam Thomas, Owners

Sassmann's Chapel

Belle Chapel
207 Linn Ave.
859-3712

Bland Chapel
107 Ray St.
646-3377

www.sassmannschapel.com

"Serving the Families of the Belle and Bland Communities Since 1920"

FIND THE PERFECT TRACTOR PACKAGE



Shop online at:
HeritageTractor.com

Jefferson City, MO
(573) 455-2353

PROUD SUPPORTER OF THE LINN LIONS FAIR

Heritage
TRACTOR



JOHN DEERE



FRESH POPPED KETTLE CORN
 POPPED IN REAL CAST IRON KETTLE
 FOR THAT TRUE KETTLE CORN FLAVOR



**PUTTER'S
POPCORN**
THE POPPIN' LEGACY CONTINUES

CALL TODAY to Book Putter's Popcorn for Your Event
573-680-5296

Timothy J. Barnhart, D.D.S., P.C.

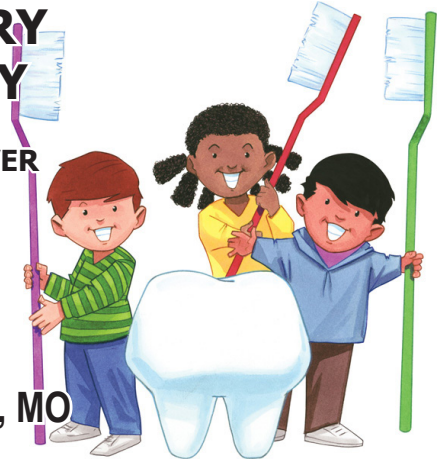
**GENERAL DENTISTRY
FAMILY DENTISTRY**

Insurance Claims Processed
VISA • MASTERCARD • DISCOVER



**SERVING THE
AREA FOR 42 YEARS**

573-455-2892

1983 Highway 63 • Westphalia, MO



Compliments of the
**OSAGE COUNTY
SHERIFF'S OFFICE**

Mike Bonham, Sheriff
 P.O. Box 619
 Linn, Mo.

Emergency Dial 9-1-1 • Non-emergency: 573-897-3107
 Sheriff's Office: 573-897-3927 Ext 800 • Jail 573-897-5750
www.osagesheriff.org



**Tackle the Tough Stuff
Polaris Ranger**

POLARIS
 Think Outside

**Precision Water &
Power Sports**

Visit us on line at www.TeamPWPS.com, or call us!

573-395-4044

10103 Marina Road • Jefferson City, Mo.



MEBRUER & SON TRUCKING, INC.

Local and Long Distance Hauling

573-897-3398 (Office)



BEER GARDEN and BEER TRACK

"The Coldest Beer in Osage County"



OSAGE COUNTY FAIR Collector Cups

WHILE SUPPLIES LAST



Hours:

Thurs. *and* Fri. 5 p.m. - 1 a.m. • Sat. 1 p.m. - 1 a.m.

FECHTEL

BEVERAGE & SALES

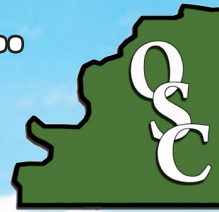
425 West Elm Street • Jefferson City, MO

We're proud to support the Osage County Fair!





**We Believe....
 In Customer
 Success**



**Osage Seed and
 Chemical LLC**

All purchases are subject to the terms of labeling and purchase documents. ®, SM, TM Trademarks and service marks, registered or applied for, of Pioneer Hi-Bred International, Inc., Des Moines, Iowa, U.S.A. ©2000 PHIL.

Steve Morfeld – Katie Kuschel
 (573)897-3163

Steve Morfeld Jr. & Katie Kuschel
 172 Pioneer Trail, Linn, MO 65051
 573-897-3163
 Stephen.Morfeld@PlantPioneer.com

see you at the FAIR!

Compliments of Management & Employees of
FREEDOM PRODUCTS CO., INC.
 573-943-2233 | LINN, MO.
 freedomwoodproducts.com

**OSAGE REGIONAL
 VETERINARY CLINIC**

Caring for Livestock, Horses and Pets



Nan Taylor-Keilholz, DVM
 Kyle Kuschel, DVM
 Hilary Haslag, DVM
 Kaitlin Poindexter, DVM

148 County Road 401
 Linn, MO 65051

573-897-3186

**In Memory of
 Lisa Ann Thomeczek**

February 13, 1965 - August 6, 2020

*Three years
 gone but never
 forgotten.*



**From the
 Thomeczek Family**



**BECKER
 MILLWORK &
 HARDWARE**

Freeburg, MO * 573-744-5204

**Have fun at the Osage Co. Fair!
 See us for all your building needs!**

- Lumber
- Cabinets
- Railing
- Locks
- Siding
- Counters
- Decking
- Tools
- Drywall
- Molding
- Roofing
- Trim
- Trusses
- Doors
- Paint
- Pipe
- Stain
- Windows



POWER WHEELS MUD RUN



JULY 15

AT THE OSAGE COUNTY FAIR

Linn Lions Club Fair Grounds • STARTING AT 4 P.M.

BRING YOUR OWN POWER WHEELS AND HELMET

Classes: 3-5 Stock, 6-8 Stock, 3-8 Modified

Rules for 2023 Osage County Fair Power Wheels Mud Bog

STOCK:

1. Must be an electric power wheels with power wheels motors (like you bought it new)
2. You may put screws in the tires (helps with traction)
3. May use a motorcycle battery instead of the power wheels battery (they last longer and do not change the voltage) No drill batteries.
4. Child must wear a helmet (bike helmets are fine)

MODIFIED:

1. Must use an electric motor
2. Any type of battery
3. Must have some type of emergency kill switch that is controlled by parent or guardian
4. Must have power wheels body, but it can be modified
5. Can be 4wheel drive
6. Stock class power wheels can bump up to the modified class without a kill switch
7. Child must wear a helmet (bike helmets are fine)



Contact Mitch Branson at 573-690-4205

SPONSORED BY PARTS CITY



LINN LIONS CLUB OSAGE COUNTY FAIR 37th ANNUAL

TRACTOR PULL

1 MILE EAST OF LINN ON HWY. 50 & CC, ENTRANCE OFF HWY. CC

THURSDAY, JULY 13, 2023

STOCK GARDEN TRACTOR PULL – 7:00 P.M.

LINN LIONS GARDEN TRACTOR PULLING RULES APPLY.

Event	Class
10, 12, 14, 16 hp Garden Tractor	Youth
10, 12, 14, 16 hp Garden Tractor	Stock
10, 12, 14, 16 hp Garden Tractor	Stock Altered
10, 12, 14, 16 hp Garden Tractor	Super Stock
10, 12, 14, 16 hp Garden Tractor	Modified
10, 12, 14, 16 hp Garden Tractor	Pro Garden
Garden Tractor	16 / 30 Cube or Outlaw

PRIZES TO BE AWARDED: 1st Prize: \$20 and trophy; 2nd Prize: \$10 and trophy; 3rd Prize: \$5 and trophy - Entry fee, \$5.00.



FARM TRACTOR PULL – 7:00 P.M.

Farmers Tractor Pullers Association

Class	Weight	Nebraska HP	42" Tires	38" Tires	34/36" Tires	32/30" Tires	28/26/24" Tires	Speed
Class 1	3500	Any		11.2	12.4	13.6	14.9	3
Class 2	4000	Any		12.4	13.6	14.9	15.5	3
Class 3	4500	Any		12.4	13.6	14.9	15.5	3
Class 4	5000	Any						8
Class 5	5500	Any		13.6	14.9	15.5	16.9	3
Class 6	6200	Any						8
Class 7	6500	Any		15.5	16.9	16.9	18.4	3
Class 8	7000	Any		16.9	18.4	18.4		3
Class 9	7500	Any						8
Class 10	8000	73.5		16.9	18.4	18.4		4
Class 11	8500	Any						8
Class 12	9000	94.5		18.4	20.8	23.1		4
Class 13	9500	Any						8
Class 14	10,000	100.0	16.9	18.4	20.8	23.1		4
Class 15	10,500	Any						8
Class 16	11,000	130.0	18.4	20.8	23.1	30.5		5
Class 17	12,000	Any	18.4	20.8	23.1	30.5		5
Class 18	13,000	Any	18.4	20.8	23.1	30.5		5

PRIZES TO BE AWARDED: 1st Prize: Trophy; 2nd Prize: \$15; 3rd Prize: \$10 Entry Fee \$6.00.



All pulls and contests operated in accordance with Pullers Association and/or Linn Lions Club Rules. Classes Subject to Change.

Rules posted on the fair website, www.osagecountyfair.com

Any class Subject to Change.
LOADING DOCKS ON GROUNDS

FOR MORE INFORMATION, CONTACT: Ron Hoffman at 291-8597 (text only) or ronhoffman1@outlook.com

PARTICIPANTS: PLEASE USE FAIR GATES #7 TO #5 TO #6.



OSAGE COUNTY EMPLOYEES

WELCOME YOU

TO THE OSAGE COUNTY FAIR

ASSESSOR - 897-2217

Tina Kammerich, Assessor
Cory Dudenhoeffer, Deputy Assessor/Fieldworker
Mary Dudenhoeffer, Senior Clerical
Ashley Starke, Clerical
Rachael Wulff -Clerical

CIRCUIT CLERK- 897-3114

Honorable Sonya D. Brandt, Associate Circuit Judge
Beth Billington, Circuit Clerk
Maryann Jacquin, Deputy Clerk
Viky White, Deputy Clerk
Doris Keilholz, Deputy Clerk

COUNTY CLERK- 897-2139

Nicci Kammerich, County Clerk
Juanita Libbert, Deputy Clerk
Charley Smith, Deputy Clerk
Brooke Dudenhoeffer, Front Desk Clerk

COLLECTOR OF REVENUE - 897-2135

Denise Nolte, Collector
Tammy Kennedy, Chief Deputy Collector

COMMISSIONERS - 897-2139

Darryl Griffin, Presiding
John Trenshaw, Eastern District
Larry Kliethermes, Western District

CORONER - 573-619-4273

A.J. Probst, Coroner
Robert Goodenough, Deputy Coroner - 573-864-0390

MAINTENANCE/CUSTODIAN

John Kennedy

PUBLIC ADMINISTRATOR - 573-619-6192

Paul G. Stratman

TREASURER - 897-3095

Valerie Prater

COUNTY SURVEYOR - 644-4701

Timothy Hamburg, Surveyor
Eugene Hamburg
Caleb Peters

RECORDER OF DEEDS - 897-2136

Cindy Hoffman, Recorder
Bonnie Hackman, Deputy Recorder

HEALTH DEPARTMENT - 897-3103

Kim Sallin, RN, Administrator
Elisha Rogers, Administrative Secretary/WIC Coordinator
Kandiss Hoffman, Nurse Manager & Immunization Coordinator
Abby Baker, EPHS & IBCLC
Katy Gallagher, CD & CCHC Nurse
Chelsea Smith, PHEP Planner
Karen Nolting, Billing Specialist
Denise Coots, Registered Dietician
Collette Babor, Breastfeeding Peer Counselor
Becky Seitz, Licensed Clinical Social Worker

911/EMERGENCY MANAGEMENT

- 897-3561 OR 897-0911
Ron Hoffman, Director • Travis Holtmeyer



PROSECUTING ATTORNEY - 897-3101

Amanda L. Grellner, Prosecuting Attorney
Ellen Nichols, Secretary
Susie Fowler, Secretary

ROAD AND BRIDGE DEPARTMENT - 897-3919

Ronald Kempker, Foreman
David Dill, Grader Operator
Gregory Dill, Grader Operator
Howard Laughlin, Grader Operator
Steven Voyles, Grader Operator
Brad Sneller - Grader Operator
Steve Heidbrink, Truck Driver
Justin Bridges, Truck Driver
Lori Clenney - Administrative Assistant

SHERIFF - 897-3927

Mike Bonham, Sheriff
Travis Shaffer, Captain
Nicholas Pappas, Lieutenant Detective
Richard Jarvis, Patrol Sargent
Patrol Deputies: Dennis Sutton, Amy Keilholz, Jeremy Carrigan,
Chris Morgan, Ben Sallin
Darrell Chrisenberry, Jail Lieutenant
Detention Staff: Sergeant Savannah Wood
Detention Officer: Gary Storey, Trent Carrigan, Lucas Morehouse, Nancy
Jones, Clayton Wolfe, Dean Hagenhoft
Administrative Staff: Charlotte Townley, Andi Rice

UNIVERSITY OF MISSOURI EXTENSION - 897-2497 Ext. 351

Elizabeth Anderson, Extension Engagement Specialist in
Community Economic Development
Becky Layton, Administrative Assistant
Bailey Veasman, Youth Program Associate




Countrywide Veterinary LLC
 SWINE • CATTLE • HORSES
 • DOGS • CATS
Gene Grellner, D.V.M.
 Medicine • Surgery • Veterinary Supplies
 "Serving Osage, Gasconade, Cole
 & Maries Counties Since 1988"

CALL FOR APPOINTMENT
 Loose Creek/Linn **897-2231**
 Emergency **897-2231**



**RUDROFF
 BUS COMPANY**

Your Local School Transportation Provider
A Fleet Excellence Company



**GIGANTIC
 FIREWORKS
 SHOW**
Saturday, July 15
10 p.m.

Sponsored by Mid America Bank,
 Jim Butler Chevrolet/Jim Butler Chrysler Dodge Jeep Ram,
 Osage County Concrete and Unterrified Democrat



HORSESHOE THROWING CONTEST

A and B Class Starts at 3 p.m. Saturday, July 15

\$10 entry fee/team. All entry fee money will be paid out in prizes.

Enter that day or call Bob Duncan at 897-3703 or Richard Dudenhoeffer at 897-2912 First Come, First Served



THE REPTILE EXPERIENCE

The reptile zoo that comes to you!

Thursday, July 13th, 8:00 p.m.

“HOLD A LIZARD, PET A SNAKE AND SEE MANY, MANY OTHER REPTILES!”



Your Host Steve the Reptile Man

Back by popular demand. Be prepared to scream and grab the person next to you. Don't miss this show!

reptileexperience.com

Have Fun At the Osage County Fair!



HATFIELD REPAIR

— Specializing in diesel repair and performance —

413 County Rd. 810
Linn, Missouri 65051



Phone 573-897-2464
www.hatfieldrepair.com

We urge your support of the following group of advertisers. They play a big part in the publication of this booklet and the success of our fair

INDEX OF ADVERTISERS

4J's Tire & 4J's Towing page 39B
American Auto Supply page 8B
American Family Insurance ... page 13B
Art's Pest Control page 27B
B&P Patterson Concrete & Construction page 28B
B&H Well Drilling page 11B
Balkenbusch Excavating page 24B
Becker Millwork & Hardware page 32B
Bescheinen Family Furniture .. page 6B
Bob's Frozen Custard page 17B
Bruce Sassmann State Rep. page 20B
Capital Region Physicians page 20B
Casper's 66 page 16B
Central Bank page 19B
Chamois Ag Supply page 7B
Chop House Grill page 38B
City of Linn page 25B
Countryside Veterinary LLC .. page 36B
Dave's Pizza & Wings page 17B
Dickneite Oil Co. page 23B
Drake-Beemont Mutual Insurance page 7B
Edward Jones, Kurt Baker ... page 22B
Fechtel Beverage page 31B
Freeburg Home Center page 26B
Freedom Mutual Insurance page 8B
Freedom Products page 32B
Hatfield Repair page 37B
Haviland Corp page 7B
Heritage Community Bank ... page 10B
Heritage Tractor page 29B
Hilkemeyer's Honda page 26B
Hometown Building Center page 8B
Jefferson City Coca-Cola page 12B
Jim Butler Automotive page 21B
Joe Machens Capital City Ford page 24B
Joes Market page 6B
Lakeside Book Company page 39B
Land Building Products page 8B
Legends Bank page 40B
Linn Printing page 23B
Linn Shoe Store page 28B
Lisa Ann Thomeczek, In Memory of page 32B
Main Street Pizza page 10B
Maries County Bank page 2B
McDonalds of Linn page 24B
Mebruer & Son Trucking page 31B
MFA Cooperative page 26B
Mid America Bank page 12B
Midtown Barber Shop page 12B
Moffat Auction Service page 17B
Morton Chapel / Sassmann's Chapel page 28B
Mt. Sterling Oil page 23B
Muenks Insurance Agency ... page 20B
NH Scheppers Distributing Co. page 22B
Osage Accounting & Tax Service page 17B
Osage Ambulance District page 28B
Osage County Abstract & Title Co page 26B
Osage County Concrete page 27B
Osage County Employees page 33B
Osage County Sheriff's Office page 30B
Osage Feed & Supply page 10B
Osage Industries page 20B
Osage Regional Veterinary Clinic page 32B
Osage Seed & Chemical page 32B
Parts City Auto Parts page 6B
Peters Precision Lawn & Landscaping page 16B
Precision Water & Power Sports page 30B
Putter's Popcorn page 30B
Quaker Windows & Doors page 15B
Rehagen Heating & Cooling . page 10B
Rudroff Bus Company page 36B
Rudy's Roofing page 15B
Shelter Insurance - Dennis Fick page 15B
Shelter Insurance - Jeff Wolfe page 17B
SK Exteriors page 6B
Spotless Car Washes page 12B
Symbols of Success page 38B
Three Rivers Electric Coop page 9B
Thriftway Supermarket page 16B
Timothy J. Barnhardt, D.D.S., P.C. page 30B
United Mutual Insurance Co. page 24B
Unterrified Democrat page 39B
Valora's Touch page 22B
VFW & Auxiliary Post 4756 page 8B
Winter-Dent page 23B

To support the fair and be contacted for the 2024 booklet call 573-897-3150 today!

Symbols of Success Trophies & Awards

107 W. Jefferson St., Linn, MO 573-897-2591 • cell 573-690-7051

Providing custom trophies, ribbons, plaques and sublimated personalized gifts and awards for 30 years.

Proud sponsor of the trophies and awards at the Osage County Fair.

Ron and Veronica Hoffman Veteran Owned & Operated Since 1993



Have Fun at the Fair!

Advertisement for Sunday Breakfast Buffet at Chop House Grille. Text includes: ALL YOU CAN EAT, Sunday Breakfast Buffet FROM 8 to 12 noon, Simply Tasteful, CHOP HOUSE GRILLE and desserts, Freshest Burgers, Salad Bar, Pastas, Steaks & Seafood, 63 Progress Lane, Linn, Mo., Tues. - Thurs. • 11 a.m. - 8 p.m. - Fri. - Sat. • 11 a.m. to 9 p.m. - Sundays from 8 a.m. to 2 p.m., 897-9999.

EST.  1864

Lakeside

BOOK COMPANY

Linn Distribution Center
Linn, MO



Unterrified Democrat

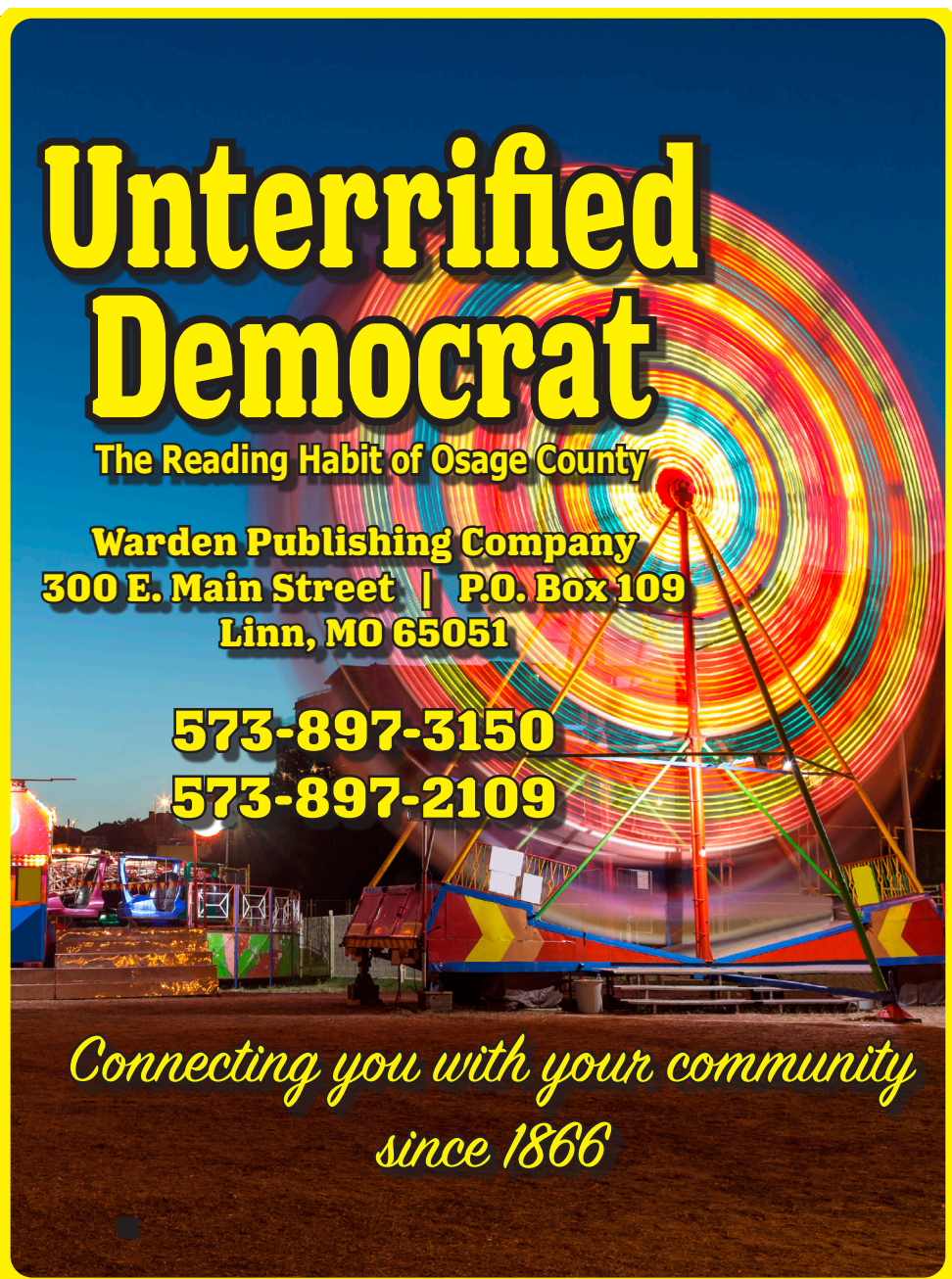
The Reading Habit of Osage County

Warden Publishing Company
300 E. Main Street | P.O. Box 109
Linn, MO 65051

573-897-3150

573-897-2109

*Connecting you with your community
since 1866*



Hope you have a BLAST at the Osage County Fair!



4J's Tire & 4J's Towing

4J's Tire, LLC
1032 E. Main Street • Linn, MO
573-897-2104

4J's Towing
547 Hwy. 89 North • Linn, MO
660-998-3406





HAVE FUN AT THE
**OSAGE COUNTY
FAIR!**
July 13-15



LEGENDS
BANK

LEGENDBK.COM MEMBER FDIC

Call or Visit Us Today!
573-897-2204

200 E. Main St, Linn
1217 E. Main St, Linn Motor Bank
155 Bank Rd, Loose Creek
1950 US-63, Westphalia

Jefferson City • Owensville • Rolla • Rolla Forum
Belle • Taos • Union